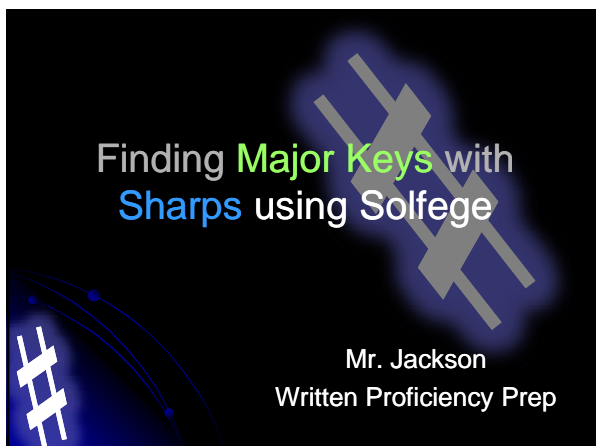



## Finding Major Keys with Sharps using Solfege

Mr. Jackson  
Written Proficiency Prep




## Reminder

- Memorize this fact for your major key signatures! If you see a staff with no sharps (or flats) like this below, **Do** is on any C on the staff - You are in **C Major!**



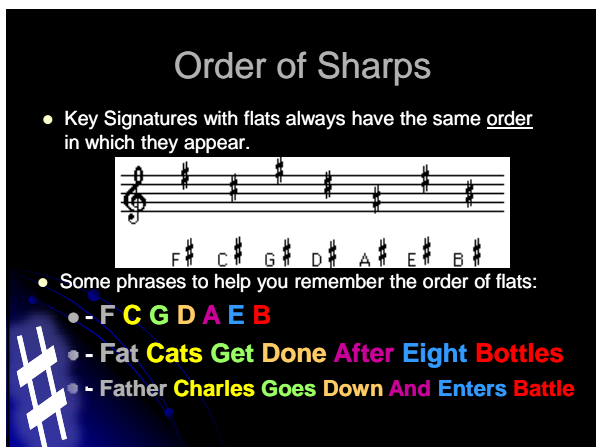
## Order of Sharps

- Key Signatures with flats always have the same order in which they appear.



F# C# G# D# A# E# B#

- Some phrases to help you remember the order of flats:
  - **F C G D A E B**
  - **Fat Cats Get Done After Eight Bottles**
  - **Father Charles Goes Down And Enters Battle**

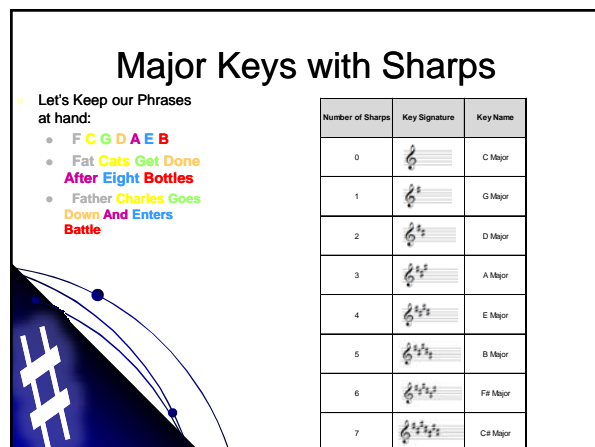


## Major Keys with Sharps

Let's Keep our Phrases at hand:

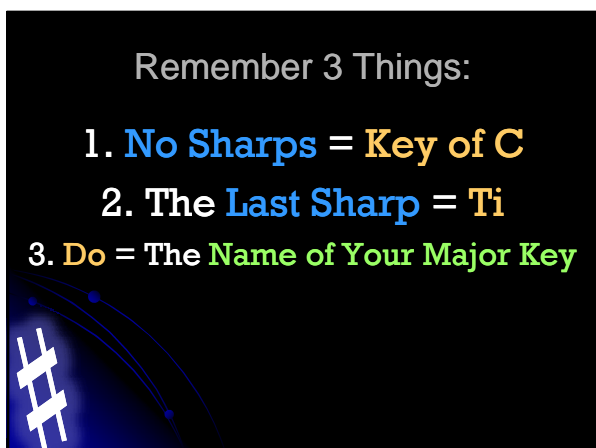
- F C G D A E B**
- Fat Cats Get Done After Eight Bottles**
- Father Charles Goes Down And Enters Battle**

Number of Sharps	Key Signature	Key Name
0		C Major
1		G Major
2		D Major
3		A Major
4		E Major
5		B Major
6		F# Major
7		C# Major



## Remember 3 Things:

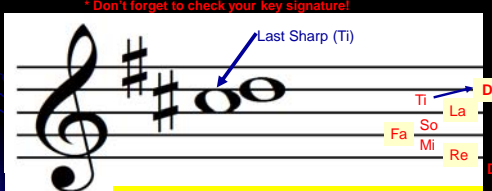
- No Sharps = Key of C**
- The Last Sharp = Ti**
- Do = The Name of Your Major Key**



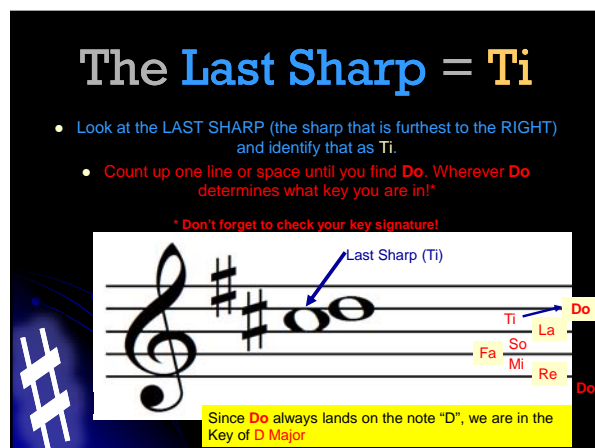
## The Last Sharp = Ti

- Look at the **LAST SHARP** (the sharp that is furthest to the **RIGHT**) and identify that as **Ti**.
- Count up one line or space until you find **Do**. Wherever **Do** determines what key you are in!

\* Don't forget to check your key signature!

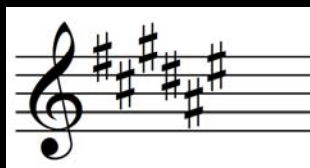


Since **Do** always lands on the note "D", we are in the **Key of D Major**



### True or False

- Examine the Key Signature below with the provided answer – is this answer correct?



> Since the last sharp (E#) is "Ti" – "Do" occurs on F, SO We are in the Key of F

# FALSE

ALWAYS REMEMBER TO CHECK YOUR KEY SIGNATURE! IT WOULD BE IN THE KEY OF F-SHARP SINCE THERE IS AN F-SHARP IN THE KEY SIGNATURE!!



### So Remember...

1. No Sharps = Key of C
2. The Last Sharp = Ti
3. Do = The Name of Your Major Key\*

\* Always Check your KEY SIGNATURE!

MUSICAL CLUE: Here is a sight reading excerpt from the show!!

